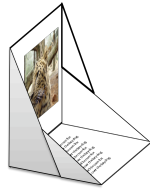


# Print, Cut, and Fold

Creative technology projects for

# Language Arts

*The following  
pages contain a  
sample section  
from the book.*

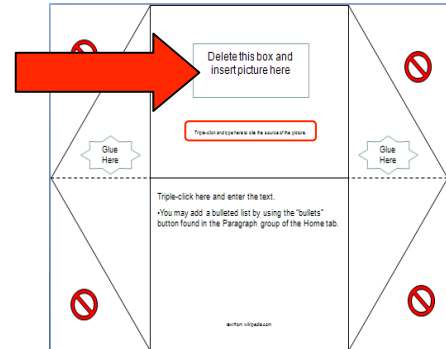


## Dioramas

(Student Instructions for Office 2007)

1. Open the DioramaTemplate.ppt file according to your teacher's instructions.
2. Delete the placeholder (rectangle with the words "Insert picture here") and add a graphic to the top of the diorama.

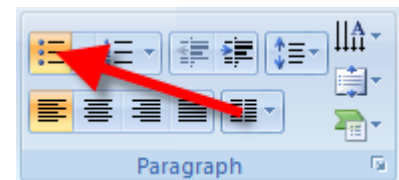
You may add a graphic by inserting Clip Art, inserting a Picture that is already saved on your computer or by pasting a photo copied from another source (always remember to abide by copyright laws and Fair Use guidelines).



3. Cite the source of your graphic by entering text into the text box in the top section (see the circled text in the diagram). To do this, triple-click on the existing text. This will highlight the whole phrase. **Do not press the delete key!** Once the text is highlighted, simply start typing and whatever you type will replace the highlighted text.
4. Insert WordArt to title the diorama. Place the WordArt graphic above or below the image you inserted.
5. Triple-click in the bottom text box and begin typing to enter the body of the text for the diorama. Use the planning sheet as a guide.

Note: The text box will grow down the page to make room for what you type. Be sure your text does not extend beyond the area of the section dividing lines. Try reducing the font size if necessary.

6. If a bulleted list is desired, click on the bullets button found at Home → Paragraph.
7. Triple-click into the bottom text box and enter your name.
8. Print the slide.



## Assembly Instructions

1. Cut away each of the corner triangles so that only the hexagon shape remains.

2. Cut across the dashed lines – do not cut the solid lines!



3. Fold along each of the remaining lines (using a “valley” type of fold where the flaps fold upward instead of downward).
4. Use a glue stick or paste to glue where indicated.
5. Fold the diorama so that the graphic panel is vertical and the text panel is on the horizontal surface. The triangular flaps should be folded and glued as shown.

